



ATELIER VALS
ELEMENTS

ELEMENTS

SWISS INSPIRED. KENTUCKY MADE.



ATELIER VALS

GATHERING

GATHERING

ATELIERVALS.DESIGN

Shown in Soft Gray Vals Stone with TZ finish



BELLINZONA

DINING TABLE ROUND

84in diameter x 30in

Hand selected reclaimed
timber base + Vals Stone top

Offered in TZ or NV finish

231162560 TZ
241012540 NV

GATHERING

ATELIERVALS.DESIGN



Shown in Onyx Vals Stone with NV finish

141150014 NV
281300042 TZ
161225044 SM

LAAX

DINING TABLE

120in x 40in x 30in

Hand selected
reclaimed timber legs +
Vals Stone top

Option: stainless steel
or copper imagination
trough

*Offered in 120in, 144in,
168in, 192in*

*Offered in TZ, NV, or
smooth finish*

Shown in Soft Gray Vals Stone with NV finish



LAVAUX

ROUND DINING TABLE

84in diameter x 30in

3 sphere Vals Stone base +
top

Offered in NV finish only

14875032 NV

GATHERING

ATELIERVALS.DESIGN

DAVOS

DINING TABLE

120in x 44in x 30in

Vals Stone top + base

Option: stainless steel or
copper imagination trough

Offered in NV finish only



14920021 NV

Shown in Alps White Vals Stone with NV finish

Shown in Alps White Vals Stone



STAF A

DINING TABLE

84in diameter x 30in

Hand selected reclaimed
timber base + Vals Stone
top

Offered in TZ or NV finish

29950000 NV
421100032 TZ

GATHERING

ATELIERVALS.DESIGN



Shown in Glacier Vals Stone with NV finish

20925046 NV
651225016 TZ
421025064 SM

BREGENZ

DINING TABLE

144in x 45in x 30in

Vals Stone base + top

Option: stainless steel
imagination trough only

*Offered in: 120in, 144in,
168in*

*Offered in TZ, NV or smooth
finish*

Shown in Alps White Vals Stone with NV finish



ZURICH

DINING TABLE

120in x 40in x 30in

Hand selected reclaimed
timber base + Vals Stone top

Option: Stainless steel or
copper imagination trough

Offered in: 120in, 144in, 168in

Offered in TZ or NV finish

231050087 NV
481200037 TZ

GATHERING

ATELIERVALS.DESIGN

ZUG

DINING TABLE

169in x 48in x 30in

Angled hand selected
reclaimed timber base + Vals
Stone top

Only offered in 169in x 48in

Offered in NV or smooth finish



331312576 NV
391350076 SM

Shown in Alps White Vals Stone with NV finish

Shown in Alps White Vals Stone with NV finish



VALS

DINING TABLE

120in x 42in x 30in

Hand selected reclaimed timber base + Vals Stone top

Option: copper imagination trough only

Hand-forged solid steel strut

Offered in: 120in, 144in, 168in

Offered in NV or smooth finish

431250012 NV
531280012 SM

GATHERING

ATELIERVALS.DESIGN



Shown in Alps White Vals Stone with NV finish

151125032 NV

LAVAUX

RECTANGLE DINING TABLE

156in x 48in x 30in

Bowed top - all 4 sides

Vals Stone top + 4 sphere
base

Only offered in: 156in

Offered in NV finish only

Shown in Alps White Vals Stone with NV finish



GATHERING

34925078 NV
48107504 TZ
42975078 SM

LUGANO

DINING TABLE

120in x 42in x 30in

Hand selected reclaimed
timber legs + stainless steel
inlay + Vals Stone segmented
top

*Offered in TZ, NV, or smooth
finish*

*This table can easily be
dismantled, moved and
relocated based on our unique
design*

ATELIERVALS.DESIGN

LORRAINE

DINING TABLE

108in x 38in x 30in

Marine grade stainless steel
legs + Vals Stone top

Option: with stainless steel
imagination trough

Offered in: 108in, 120in, 144in
Bar height option: 42in

Offered in NV finish only



211600012 NV

Shown in Soft Gray Vals Stone with NV finish

Shown in Alps White Vals Stone with NV finish



BASEL

DINING TABLE

147in x 54in x 30in (at the widest point)

3 1/2in thick

Bowed top - all 4 sides

Vals Stone base + top

Only offered in 144in x 48in

Offered in NV finish only

341050014 NV

GATHERING

ATELIERVALS.DESIGN

Shown in Alps White Vals Stone with TZ finish



14795024 NV
17950012 TZ

LAUREZ

DINING TABLE

60in diameter x 30in

Marine grade stainless
steel + Vals Stone base and
top

Offered in TZ or NV finish

A photograph of an outdoor lounge area. In the foreground, a large, textured, grey stone vase sits on a light-colored stone patio. To the right, a modern, low-profile lounge sofa with light-colored cushions is visible. The background shows a grassy area. The text 'ATELIER VALS' is centered over the image.

ATELIER VALS

LOUNGE

LOUNGE

ATELIERVALS.DESIGN

MEILEN

LOUNGE TABLE

60in x 60in x 14in

Vals Stone top + marine grade
stainless steel base (2 pieces)

Offered in TZ or NV finish



14925022 TZ
15650031 NV

Shown in Onyx Vals Stone with TZ finish



Shown in Wheat Vals Stone with NV finish

14875026 NV

LAAX

LOUNGE TABLE

60in x 60in x 14in

Hand selected reclaimed
timber base + Vals Stone
top

*Recommended for an
interior space or covered
outdoor area*

Offered in NV finish only

Shown in Soft Gray with TZ finish



VERBANIA

LOUNGE TABLE

36in x 60in x 14in

Vals Stone top + marine
grade stainless steel base

Offered in TZ finish only

14720027 TZ

LOUNGE

ATELIERVALS.DESIGN

VAUD

LOUNGE TABLE

60in x 42in x 14in

Hand selected reclaimed
timber base + Vals Stone
top

*Recommended for an
interior space or covered
outdoor area*

Offered in TZ or NV finish



85420064 TZ
86385071 NV

Shown in Soft Gray Vals Stone with TZ finish



Shown in Soft Gray Vals Stone with TZ finish

12900024 TZ
13750031 NV

LUINO

LOUNGE TABLE

58 3/4in x 41in x 12in

Solid Vals Stone

Biomorphic shape

Offered in TZ or NV finish

A long, rectangular concrete fire pit is the central focus, filled with grey lava rocks and a fire. The fire pit is set on a light-colored stone patio. In the background, there is a swimming pool with a reflection of the sky and trees. The scene is set in a lush, green outdoor environment.

ATELIER VALS

FIRE

FIRE

ATELIERVALS.DESIGN



*Shown in Soft Gray Vals Stone with Onyx TZ
finish accents*

NV with accents 851150026
NV only 921020032

BERN

FIRE FEATURE RECTANGLE

108in x 25in x 16in

Includes linear stainless-
steel burner, pan, electric
ignition and rolled lava rock
for finished burn surface

Option: TZ finished accents

Shown in Wheat Vals Stone with NV finish



AROSA

FIRE FEATURE

50in diameter x 18in
(47in diameter without border)
24in inside diameter

Stainless steel burner, pan,
electric ignition and rolled
lava rock for finished burn
surface

13in x 2in thick coping

Offered in TZ or NV finish

82668815 NV
41875012 TZ

FIRE

ATELIERVALS.DESIGN

BERN

FIRE FEATURE SQUARE

42in x 42in x 14 1/2in

24in stainless steel burner,
pan, electric ignition and
rolled lava rock for finished
burn surface



86868819 TZ
72650012 NV

Shown in Onyx Vals Stone with TZ finish

Shown in Soft Gray Vals Stone with NV finish



ZERMATT

FIRE FEATURE

24in diameter x 22 1/2in

2 1/2in Vals stone round
base for air flow access

18 1/2in Vals Stone round
fire basin

1 1/2in Vals stone top lid

18in flat round SS pan and
12in Penta burner NG

Electric with remote

2 bags of rolled lava rock

84395043 NV

FIRE

ATELIERVALS.DESIGN



Shown in Onyx Vals Stone with NV gloss finish

841050037 NV

TICINO

FIRE FEATURE

66.5in diameter x 16in
36in inside diameter

Includes stainless-steel
burner, pan, electric
ignition and rolled lava rock
for finished burn surface

8 piece unit with interior
cable system assembly

Offered in NV finish only

Shown in Vals Stone soft gray with NV finish



EZE

FIRE FEATURE

42in diameter x 16in + base
for venting

Burner and rolled lava stone
included

14475098 NV

FIRE

ATELIERVALS.DESIGN



ATELIER VALS

OTHER ELEMENTS

OTHER ELEMENTS

ATELIERVALS.DESIGN

Shown in Onyx Vals Stone with NV finish



ZURICH

BAR

96in x 30in x 42in

Vals Stone top + hand selected
reclaimed timber base

Offered in NV or smooth finish

84720083 NV
92775083 SM

BAR

ATELIERVALS.DESIGN

CHILE

GRILL

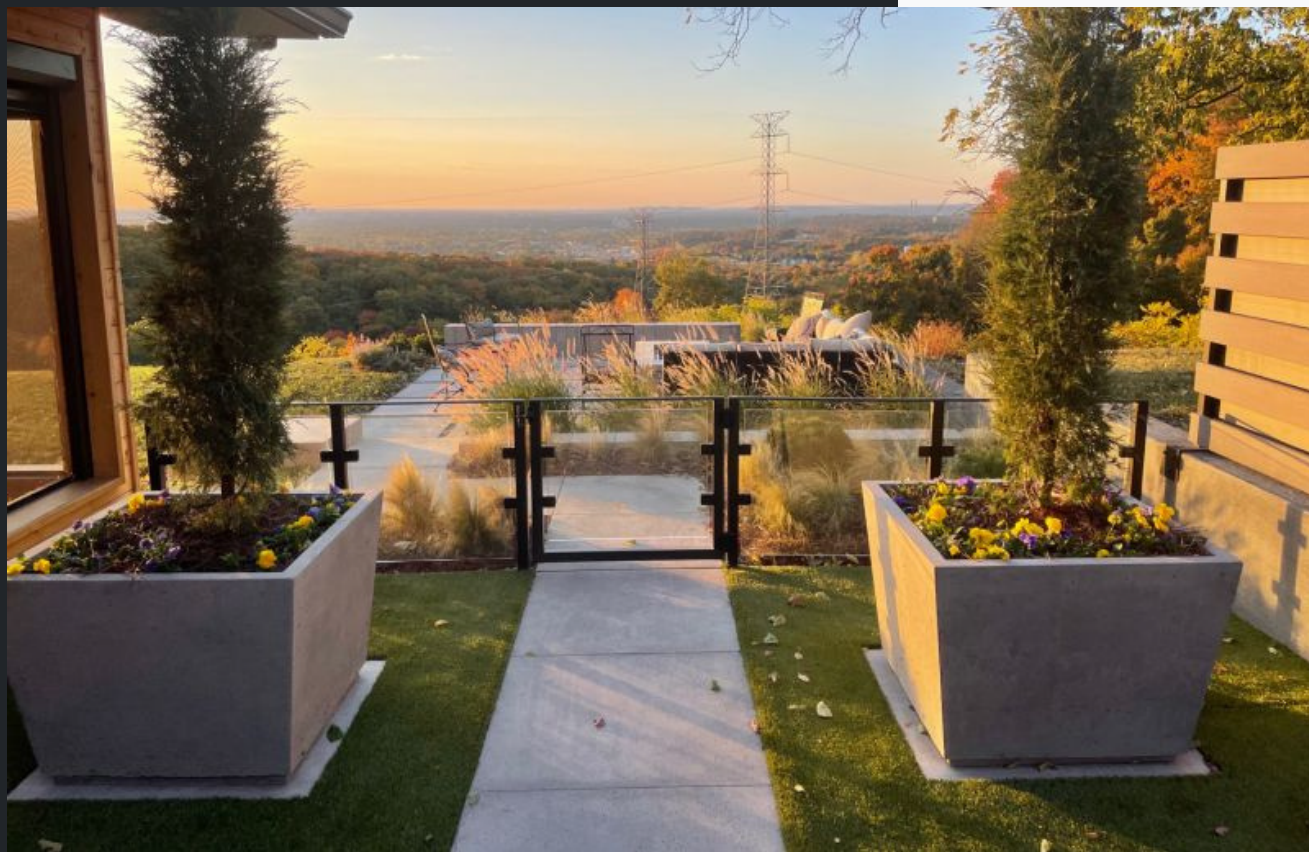
Custom size

Offered in NV finish only



Shown in Onyx Vals Stone with Kincho Grill
<https://kinchogrills.com>

Shown in Glacier Vals Stone with NV finish



GENEVA

PLANTER

36in x 27in

4in base x 3in walls

Offered in: 36in, 30in, 24in,

Offered in NV finish only

Includes drainage system

15120047 NV

PLANTERS

ATELIERVALS.DESIGN



*Shown in premium color, Kiawah green Vals Stone
with NV finish*

1492562 NV

EZE

PLANTER

42in diameter x 12in

Custom sizes available
upon request

Offered in NV finish only

Shown in Glacier Vals Stone with NV finish



14175056 NV

SEATING

STEIN

CHAIR

Details upon request

Offered in NV finish only

ATELIERVALS.DESIGN



*Shown in Vals Stone Kiawah Green
with NV finish*

14255012-36 NV
14475012-42 NV

SION

**OPTION: FIRE, WATER OR
PLANTER BOWL**

**SIZES OFFERED:
36" DIAMETER OR
42" DIAMETER, 2" WALL**

VALS STONE COLORS



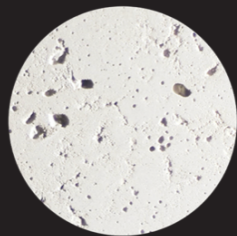
WHEAT



SOFT GRAY



ONYX



GLACIER



ALPS WHITE

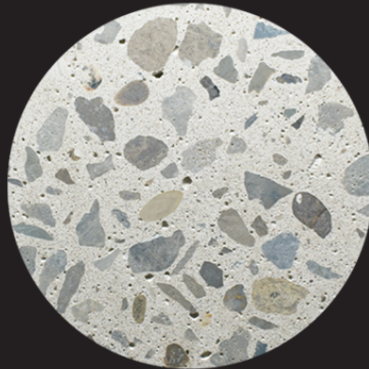


PECAN

VALS STONE FINISHES



SMOOTH



TERRAZZO



NV



Kristin Hart Willard - Elements

(502) 649-3681 / @atelierval

Kristin@AtelierVals.design